

Northamptonshire Safeguarding Children Board Annual Report 2015-16



Foreword from the Chair

Welcome to the 2015–16 Annual Report of the Northamptonshire Safeguarding Children Board (NSCB). This is my third Annual Report as Chair of the NSCB and this report gives an overview of the work the NSCB and its partner agencies have delivered to ensure that the children and young people of Northamptonshire are safeguarded and their welfare is promoted.

The report provides details of the progress made by the NSCB in coordinating and driving forward safeguarding work across the partnership. During 2015-16, the Board has continued its work with the Northamptonshire Improvement Board, as it has done since its establishment in November 2013. The Improvement Board was formed under the Department for Education's Direction Notice, to ensure that the necessary improvements required following the Ofsted Inspections are realised and maintained.

The Improvement Board has three priorities:

- 1) Early Help
- 2) Child Protection and Assessments; and
- 3) Looked After Children Services

Within these priorities, the impact and role of the NSCB is crucial in delivering change. It is clear that progress has been made since the inspection and the Board continues to oversee changes and improvements and challenge partners where necessary.

An additional target this year has been the approaching return of Ofsted. Their inspection of Northamptonshire County Council, and review of the NSCB, took place in February 2016. Whilst this report documents activities to 31st March 2016, I would like to share with you, that Ofsted rated the NSCB as 'requires improvement'. Ofsted outlined four recommendations which will be actioned during the course of the year (report available on the NSCB website). Feedback was very positive in a number of areas including Child Death Overview Panel, Child Sexual Exploitation, Learning & Development, Policies & Procedures and Communications (website).

In my previous reports, I identified key priorities for the year ahead for the NSCB to improve upon and deliver against, and I am confident that progress has been made, and that children and young people in the county are safer as a result.

Working closely with the Improvement Board's Independent Chair, I have identified the following as key areas of focus for the next 12 months; some of these are a continuation of last year's themes, where there is work still to be done. The priorities are:

- Continue engagement of all partners with Full Board, Executive Support Group and Sub Groups of the Safeguarding Children Board
- The ongoing strategic challenge around service developments to safeguarding children, with particular focus upon:

- Developing a good understanding of Neglect for all professionals in the County and promoting use of the Neglect Toolkit, which will be launched in May 2016
- Continuing the prevention and awareness raising activities for Child Sexual Exploitation (CSE) and Female Genital Mutilation (FGM)
- Having a clear understanding of the issues around homelessness for families and 16-17 year olds
- Improving information sharing mechanisms across the partnership, including data
- Continuing engagement work with children and young people across the county
- Raising education and awareness of privately fostered children
- Focusing on our most vulnerable groups, such as Looked After Children, Homeless 16-17 year olds and Disabled Children
- Review and restructure of the Board structure to improve efficiency and effectiveness
- Continuing the effectiveness of all Sub Groups
- Oversight of the implementation of The Children's Trust



Keith Makin
Chair of Northamptonshire
Safeguarding Children Board

Contents

Chapter 1: Northamptonshire in Context	4		
• Local Demographics	4		
• Vulnerable Groups	4		
• Children in Need	4		
• Homelessness	4		
• Children with a Child Protection Plan	5		
• Looked After Children (LAC)	5		
• Children who are Privately Fostered	5		
• Disabled Children	5		
• Young People who Offend or are at Risk of Offending	5		
• Children who are at Risk of Sexual Exploitation (CSE) and Missing Children	5		
• Young People with Mental Health Issues	6		
• Neglect	6		
• Local Trends	6		
Chapter 2: Governance and Accountability Arrangements	7		
• What is the NSCB?	7		
• Our Objectives	7		
• Organisation of NSCB	8		
• Executive Support Group	9		
• NSCB Structure	10		
• Key Roles	11		
• Key Relationships	11		
• Measuring Performance	12		
• Financial Arrangements	13		
Chapter 3: Overview of Progress over 2015-16	14		
• Early Help and Prevention	14		
• Multi-Agency Safeguarding Hub (MASH)	14		
• Children's Centres	16		
• Work With Schools	17		
• Designated Officers	18		
• Young People who Self Harm	19		
• Domestic Abuse	19		
• Licensing Applications	19		
• Young People who Offend or are at Risk of Offending	19		
• Prevent	20		
• NHS Nene and NHS Corby Clinical Commissioning Groups	20		
• Northamptonshire Police	21		
Chapter 4: Progress Reports from Sub Groups	22		
• Child Sexual Exploitation (CSE) & Missing	22		
• Communications	23		
• Female Genital Mutilation (FGM)	24		
• Learning & Development	25		
• Policy & Procedures	27		
• Quality Assurance (QA)	28		
• Young People's NSCB	29		
• Your Safety	30		
Chapter 5: What Happens When a Child Dies or is Seriously Harmed in Northamptonshire?	32		
• Child Death Reviews	32		
• Serious Case Reviews	32		
Chapter 6: Challenges Ahead and Future Priorities	34		
• National Drivers	34		
• Annual Safeguarding Children Conference – July 2016	34		
• NSCB Business Plan 2015–17	34		
• Key Priority Areas for 2016-17	34		
Chapter 7: What Next for Child Protection in Northamptonshire?	36		
• Key Messages	36		
Board Membership List	37		

Chapter 1 – Northamptonshire in Context

Local Demographics

The population of Northamptonshire stood at 714,392 as of 2014's mid year estimate. Of this figure, 25% were aged between 0 and 19 years. Northamptonshire has a predominantly white ethnic population with 83.2% of children aged 0-19 of white British ethnicity and 95.5% of children aged 3-14 whose first language is English (Office for National Statistics, 2011 Census).

The county is a mix of urban and rural populations, with areas of affluence and areas of significant deprivation. 57 areas in Northamptonshire are among the most deprived in the country (Index of Multiple Deprivation 2010).

Vulnerable Groups

This report looks at the categories of children and young people in Northamptonshire who have been identified by the Local Authority and other agencies, as in need of protection as they are more vulnerable.

The categories are not exhaustive and many factors such as going missing from home and living in households where there is domestic abuse, substance misuse and/or parents are mentally ill can place children at increased risk of harm from abuse and/or neglect.

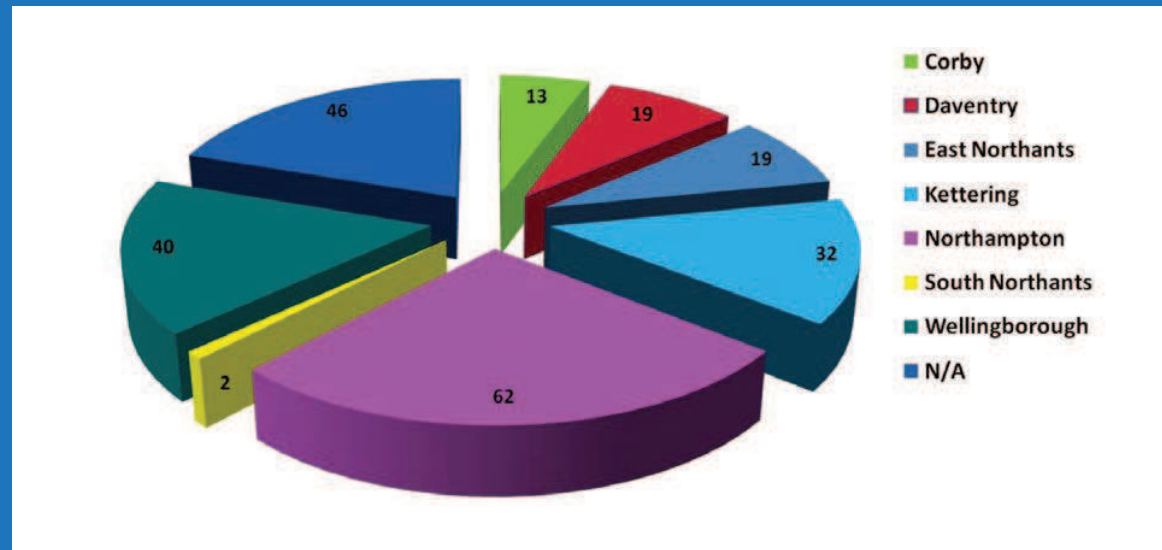
Children in Need

The Children in Need total caseload was 5,570 in March 2016, this compares to 5,305 in March 2015. Despite this increase, Social Worker caseloads are significantly lower than last year, with the majority of workers having 11-20 cases as at March 2016.

Homelessness

The Annual Review of the NSCB identified housing issues as a key area of development for the Safeguarding Board. Following the launch of the Northamptonshire Housing Protocol – Homeless 16-17 Year Old Young People, in November 2015, the Chair of the NSCB wrote to all District and Borough Councils to understand the provision and support provided to homeless young people and families facing homelessness and housing issues. This issue remains a priority for the Board during 2016-17.

The table below indicates the breakdown of homeless 16-17 year old young people in the county.



Chapter 1 – Northamptonshire in Context

Children with a Child Protection Plan (CPP)

Children who have a Child Protection Plan are considered to be in need of protection from either neglect, physical, sexual or emotional abuse, or a combination of one or more of these. The CPP details the main areas of concern, what action will be taken to reduce these concerns and by whom, and how we will know when progress is being made. At the end of March 2016 this figure was 968, which is a decrease of 3% from 2015 and is significantly higher than comparator areas. December 2015 saw an in-year high of 1,090 children on Child Protection Plans.

Looked After Children (LAC)

Looked After Children are those looked after by the Local Authority. Only after exploring every possibility of protecting a child at home will the Local Authority seek a parent's consent or a Court decision to move a child away from his or her family. Such decisions, whilst incredibly difficult, are made when it is in the best interest of the child. There were 993 Looked After Children at the end of March 2016, compared with 935 at the end of March 2015; this represents a 6% increase in the year.

Children who are Privately Fostered

Parents may make their own arrangements for their children to live away from home. These are privately fostered children. The Local Authority must be notified of these arrangements. At the end of March 2016 the Local Authority was aware of 15 privately fostered children.

However, reported numbers remain low despite the efforts of the Local Authority and the NSCB to raise awareness of the need to notify the Local Authority of these arrangements. This remains a key focus and the NSCB have plans in place to improve awareness of the need to report private fostering arrangements. This will ensure that key staff are aware of the need to report children who are being privately fostered, and that the council complies with the statutory visiting requirement for this cohort of children.

Disabled Children

There has been a small rise in the number of disabled children with a Child Protection Plan. On 31 March 2016, there were 58 disabled children subject to Child Protection Plans (6% of the total 968 CPP population) compared to 36 children at the end of March 2015.

Young People who Offend or are at Risk of Offending

Performance has continued to improve year on year despite the reductions in financial resource and the higher proportion of children and young people with entrenched problematic behaviours and needs within the Youth Offending Service (YOS) caseload. Reoffending has reduced slightly and the use of custody has dropped from 17 in 2014-15 to 10 in 2015-16. There has been an increase in the use of remand to Youth Detention Accommodation from 455 bed-nights in 2014-15 to 508 in 2015-16. The number of young people on remand has reduced by 50%, from 15 in 2014-15 to just 8 in 2015-16. First time entrants to the Youth Justice System continue to fall.

Children who are at Risk of Sexual Exploitation (CSE) and Missing Children

Multi-agency work to identify children and young people who may be at risk of Child Sexual Exploitation in Northamptonshire is ongoing. During the year, 501 young people with issues relating to CSE were in contact with the NSCB (564 initial contacts in all). Of these, 350 of the Initial Contacts converted to a referral, a significant increase from the previous year's figure of 363 contacts (328 young people). This is due to increased awareness of the issue and a local communications campaign led by the CSE Sub Group.



Chapter 1 – Northamptonshire in Context

Young People with Mental Health Issues

The Children and Adolescent Mental Health Service (CAMHS) had 3,384 new referrals in 2015-16. The average waiting time from referral to assessment was 7 weeks, with 80% of cases seen within 13 weeks.

The service now has a discreet pathway for children with Autistic Spectrum Disorders and Attention Deficit/Hyperactivity Disorder. Additional investment into CAMHS is going towards reducing waiting times and developing an exciting new day unit for children and young people with eating disorders.

Neglect

During 2015-16 work has been undertaken to strengthen the partnership approach to neglect. This included the development of a Neglect Strategy, which was approved by Board in September 2015 and the development of a Neglect Toolkit. The Toolkit utilises the Graded Care Profile as the core assessment tool for practitioners and will be launched at the Safeguarding Conference on 26th May 2016.

Local Trends

The NSCB Dashboard is scrutinised each quarter at the Quality Assurance Sub Group and subsequently reviewed by the Board. This helps NSCB and partners to understand safeguarding activity in Northamptonshire and the review of local trends and patterns means that where appropriate, actions are identified and directed by the Chair. Referrals to Social Care remained high throughout the year, finishing with 16,710; a 14% increase from March 2014. A high proportion of the referrals each month still go to Early Help and require no further action by Social Care.

From April 2014, it was agreed that each agency would receive referral data and subsequent outcomes, so they can challenge and improve the profile of referrals and reduce the amount that result in 'no further action'. This has worked effectively and has improved understanding of the quality of referrals. It is expected that the improved tracking of referrals and the strengthened Early Help support will help to reduce the number of such referrals.

Chapter 2 – Governance and Accountability Arrangements

What is the NSCB?

The NSCB is the key statutory mechanism for agreeing how the relevant organisations in Northamptonshire will co-operate and work together to safeguard and promote the welfare of children and for ensuring that this work is effective. The NSCB was established in compliance with The Children Act 2004 (Section 13) and The Local Safeguarding Children Boards Regulations 2006.

The work of the NSCB during 2015–16 was governed by the statutory guidance in Working Together to Safeguard Children 2015 (published in March 2015). This sets out how organisations and individuals should work together to safeguard and promote the welfare of children, along with the Local Safeguarding Children Board Regulations 2006 which sets out the functions of Local Safeguarding Children Boards.

Our Objectives

The NSCB co-ordinates and ensures the effectiveness of what is done by each agency on the Board, for the purposes of safeguarding and promoting the welfare of children in Northamptonshire.

The aim is to do this in two ways:

1. To co-ordinate local work by:

- Developing robust policies and procedures
- Participating in the planning of services for children in Northamptonshire
- Delivering a comprehensive Learning and Development Strategy so that all professionals working with children are informed and able to safeguard; and
- Communicating the need to safeguard and promote the welfare of children and explaining how this can be done

2. To ensure the effectiveness of the work by:

- Monitoring what is done by partner agencies to safeguard and promote the welfare of children
- Undertaking Serious Case Reviews and other multi-agency case reviews and sharing learning opportunities
- Collecting and analysing information about child deaths; and
- Publishing an Annual Report on the effectiveness of local arrangements and promote the welfare of children in Northamptonshire





Chapter 2 – Governance and Accountability Arrangements

Organisation of the NSCB

The Board meets four times during the year and has a membership made up of representatives from all statutory partners and others concerned with safeguarding children. The Chair of the Board is Keith Makin, who has led the Board since March 2014, in its drive to ensure that all children in the county are properly safeguarded.

As of 31st March 2016, the Board membership is as follows:

- BeNCH CRC Ltd
(Bedfordshire, Northamptonshire,
Cambridgeshire and Hertfordshire Community
Rehabilitation Company)
- CAFCASS
- District and Borough Councils
- East Midlands Ambulance Service
- Healthwatch Northamptonshire
- Horizons
- Kettering General Hospital
- 2 Lay Members
- National Probation Service
(Northamptonshire Local Delivery Unit)
- Nene and Corby Clinical Commissioning
Groups
- NHS England
- Northampton General Hospital
- Northamptonshire County Council,
including Safeguarding Adults, Children's
Services and Public Health
- Northamptonshire Fire and Rescue
- Northamptonshire Healthcare Foundation Trust
- Northamptonshire Police
- Rainsbrook Secure Training Centre
- Representatives from County Schools
- St Andrew's Healthcare
- Voluntary Sector Representative
- Youth Offending Service

A list of current Board members is provided at the end of this report.

Chapter 2 – Governance and Accountability Arrangements

Executive Support Group (ESG)

The Executive Support Group of the NSCB meets on a monthly basis in order to drive the work of the NSCB and to ensure that the Board is delivering against the Improvement Board's actions. As of 31st March 2016, the membership of the group consists of:

- NSCB Independent Chair
- Senior Probation Officer, Bedfordshire, Northamptonshire, Cambridgeshire and Hertfordshire Community Rehabilitation Company (BeNCH)
- Senior Probation Officer, National Probation Services (Northamptonshire Delivery Unit)
- Director of Nursing and Quality, Nene and NHS Corby Clinical Commissioning Groups
- Deputy Director for Safeguarding, Nene and NHS Corby Clinical Commissioning Groups
- Representative of Public Health, Northamptonshire County Council
- Director of Children, Families and Education, Northamptonshire County Council
- Assistant Director, Safeguarding and Children's Services, Northamptonshire County Council
- Assistant Director, Quality and Performance, Northamptonshire County Council
- Communities Manager, Northamptonshire County Council and Northamptonshire Police

- Director of Nursing, AHPs and Quality, Northamptonshire Healthcare Foundation Trust
- Deputy Director of Operations, Children and Ambulatory Services, Northamptonshire Healthcare Foundation Trust
- Assistant Chief Constable, Northamptonshire Police
- Business Manager, Northamptonshire Safeguarding Children Board
- Representative of the Office of the Police and Crime Commissioner

In addition to the core membership, the Chairs of each of the NSCB Sub Groups attend meetings regularly to provide progress updates, and to discuss challenges and issues facing the Sub Groups. The challenge given by the Executive Support Group ensures that there is sufficient pace to the delivery of the required improvements. Key priorities in the year included:

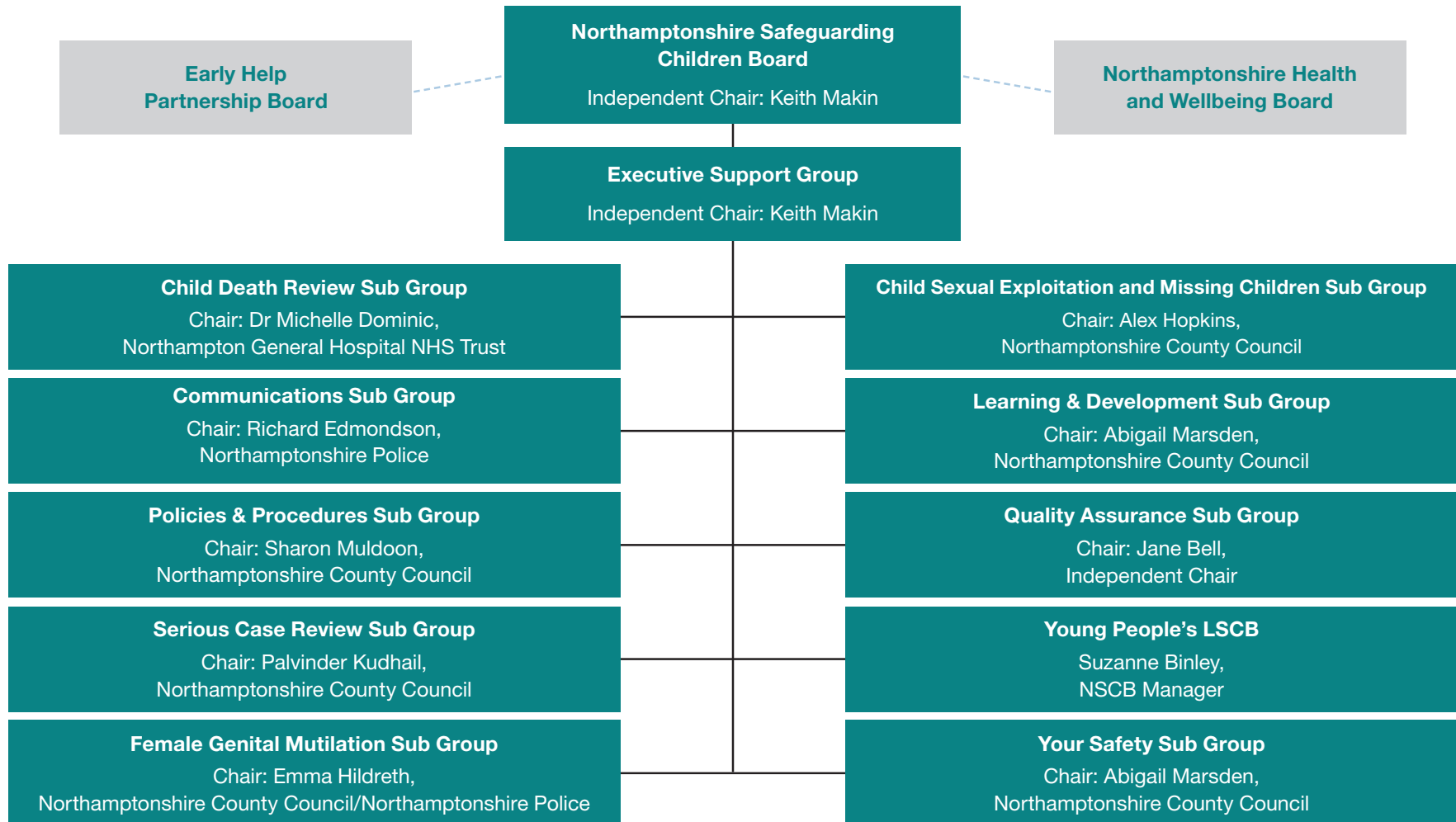
- Monitoring progress against the Improvement Board Action Plan in preparation for Ofsted Inspection and NSCB Review
- Scrutiny of progress against the NSCB Business Plan
- Scrutiny of attendance at, and reporting to, Child Protection Conferences, ensuring that professionals have access to all relevant information pertaining to a case

- Review of the Learning and Development Strategy and Learning and Improvement Framework
- Development of the Neglect Strategy
- Development of the 'Prevent' anti-radicalisation Strategy
- Review of Annual Reports for NSCB Sub Groups
- Creation of the Female Genital Mutilation (FGM) Sub Group
- Preparation for Ofsted Inspection and NSCB Review
- Child Sexual Exploitation Campaign Phase 2
- Safe Sleeping Campaign
- Driving forward the introduction of 'Health Passports' for Care Leavers and ensuring that all young people leaving care have details of their medical histories since birth
- Scrutiny of the findings of the Early Years Section 11, Multi-Agency Case Audits, Serious Case Reviews and other Learning Reviews
- Reviewing the process for Multi-Agency Case Audits and the reporting of the learning that results

Chapter 2 – Governance and Accountability Arrangements

NSCB Structure

The main Board is supported by a range of Sub Groups that enable its function. This is shown in the structure chart below.



Chapter 2 – Governance and Accountability Arrangements

Key Roles

Independent Chair

The Board continues to be led by an Independent Chair, ensuring a continued independent voice for the Board. Keith Makin joined the Board in March 2014. The Independent Chair is directly accountable to the Chief Executive of Northamptonshire County Council and continues to work closely with the Director of Children's Services to discuss safeguarding challenges. Whilst the direct accountability of the Chair is to the Local Authority, the role is independent, with an equal emphasis being given to all partners on the Board, including the voluntary and independent sectors, the Lay Members of the Board and increasingly, the voices of children and young people in the county.

Local Authority

Northamptonshire County Council is responsible for establishing an LSCB in their area and ensuring that it is run effectively. The ultimate responsibility for the effectiveness of the NSCB rests with the Leader of Northamptonshire County Council. The Chief Executive of the Council is accountable to the Leader. The Lead Member for Children's Services is the Councillor elected locally, with responsibility for making sure that the Local Authority fulfils its legal responsibilities to safeguard children and young people. The Lead Member contributes to the NSCB as a participating observer and is not part of the decision making process.

Partner Agencies

All partner agencies in Northamptonshire are committed to ensuring the effective operation of the NSCB. This is supported by the NSCB constitution which sets out the governance and accountability arrangements. Members of the Board hold a strategic role within an organisation and are able to speak for their organisation with authority, commit their organisation on policy and practice matters and hold their organisation to account.

Designated Professionals

Health Commissioners have a Designated Doctor and Nurse to take a strategic, professional lead on all aspects of the Health Service contribution to safeguarding children across the local area. Designated professionals are a vital source of professional advice on safeguarding children matters to partner agencies and the NSCB; these professionals sit on a number of the Sub Groups of the NSCB and inform decision-making.

Key Relationships

Northamptonshire Improvement Board

The NSCB has a key role in the delivery of a range of actions from Northamptonshire's Improvement Plan. In order to ensure this happens, the NSCB Chair is a member of the Improvement Board, along with all public sector partners in the county. This arrangement ensures that the changes required to ensure children are safeguarded which require partner actions are co-ordinated, delivered against and that partners are held to account for their role in improving safeguarding.

Children's Early Help Partnership

The NSCB has a working relationship with the Children's Early Help Partnership (EHP). The EHP is responsible for driving improvements within Early Help structures in Northamptonshire. The Chair of the EHP is also a member of the NSCB's Executive Support Group and Board. The work of the Early Help Partnership is focused on four key outcomes:

- All children are safe
- All children achieve their best in education, are ready for work and have skills for life
- All children grow up healthy and have improved life chances
- All vulnerable children achieve the best possible outcomes

The Early Help Partnership Board is supported by the 0-5 Early Years Delivery Group, the Young Healthy Minds Delivery Group Disabled Children and Young People's Delivery Group.

During 2015-16 the EHP has produced a revised Early Help Strategy for 2015-2020 with the goal of enabling children and families to access appropriate support as soon as possible, so that they can maintain their quality of life, prevent issues escalating, and feel stronger and be happier and more confident. The strategy includes:

- 12 partnership objectives with a focus on improvements to the early help system, for both the EHP and the NSCB
- 31 measureable indicators for the effectiveness and impact of early help in the county

Chapter 2 – Governance and Accountability Arrangements

- A requirement for all partners involved in supporting Early Help to focus rigorously on the 4 early help outcomes, with associated performance indicators to ensure the effectiveness of all strategies, programmes and plans

During 2015-16 the EHP and its Delivery Groups have led on a number of initiatives to help improve the Early Help Offer in Northamptonshire including:

- Oversight of the Early Help Families Project
- Acting as a reporting body for the Locality Forums
- Commissioning of a countywide Anti-Bullying campaign
- EHP Shadow Board producing and leading on a Legal Highs and Domestic Abuse campaign aimed at Young People; and
- Launch of a Northamptonshire 1001 Critical Days Manifesto

Following discussion at the NSCB's Executive Support Group the EHP will become a Sub Group of the NSCB in financial year 2016-17 and will report directly into the Board and ESG to further enhance the local arrangements and ensure that good early help is offered to prevent families reaching Tier 3 and 4 intervention.

The Children's Early Help Partnership will produce and oversee the delivery of the Children and Young People's Plan and the Early Help and Prevention Strategy. These documents will be informed by the Joint Strategic Needs Assessment (JSNA), national and local evidence for interventions and other relevant local data and reports. The EHP will also develop and monitor the work of the Locality Forums.

The Health and Wellbeing Board

The Health and Wellbeing Board (HWB) was set up in Northamptonshire during 2013. It brings together leaders from the County Council, NHS and District and Borough Councils to develop a shared understanding of local needs, priorities and service developments. The NSCB Chair is an advisor to the HWB and the NSCB reports annually to the HWB to ensure that it tackles the key safeguarding issues for children in Northamptonshire.

Clinical Commissioning Groups

There are two Clinical Commissioning Groups in the County, Corby CCG and Nene CCG, both of whom contribute to the valuable work of the NSCB.

Police and Crime Commissioner

The Police and Crime Commissioner (PCC) is an elected official charged with securing efficient and effective policing in the area. The NSCB presents its Annual Report to the PCC outlining key safeguarding challenges and any action required for policing in the area.

Northamptonshire Schools

The engagement of schools in Northamptonshire is key to ensuring the safeguarding of children and much work has been undertaken throughout this year. The NSCB has worked with education leads to ensure that all schools regularly review and update their Section 11 audit Action Plans. Schools are also represented on the NSCB Board and Improvement Board.

Measuring Performance

The NSCB has a performance framework in place that is used to measure progress and identify areas of concern across the partnership. A high level Performance Dashboard is in place containing 44 indicators. The indicators have been identified as being central to understanding safeguarding patterns and progress. The dashboard is reviewed at each NSCB Full Board. Alongside the Dashboard there is a further detailed Scorecard. This is reviewed at the Quality Assurance Sub Group and Board. Each partner is responsible for the timely reporting of the information with supporting narrative and details of what actions need to be taken in order to improve or address performance.

Chapter 2 – Governance and Accountability Arrangements

Financial Arrangements

Board partners continue to contribute to the NSCB's budget, in addition to providing a variety of resources 'in kind.'

Contributions from partners for 2015-16 reached £349,144.81. With a carry forward figure of £80,522, the total income available to the Board was £430,182. In addition, surplus funds from the Early Help Partnership Board were made available for a number of activities to help the work of the Board.

Activities include the Protective Behaviours training in Schools, the Domestic Abuse Notification Scheme in Schools and the Child Sexual Exploitation (CSE) Phase 2 media campaign. The necessary governance arrangements to transfer funds were agreed by both NSCB and EHPB partners.

The income ensured that the overall cost of running the NSCB was met. Existing costs around Serious Case Reviews will be carried forward to 2016-17. The Board agreed to carry forward £15,000 to 2016-17.

NSCB Expenditure	2015-16	Notes
Staffing costs	£147,934.33	<i>Includes appointment of Business Manager</i>
Stationery	£405.74	
Design, print, conferences and room hire	£7,768.72	<i>Includes YP NSCB</i>
Consultancy	£212,464.22	<i>Includes: NSCB Chair, QA Chair, training provision, website provision, tri-x, licences and conference speakers</i>
Serious Case Reviews	£37,085.05	
Additional activities	£74,853.15	<i>Funded by EHPB</i>
TOTAL	£480,511.21	

Income (Partner Contributions)	2015-16
BeNCH CRC	£1,289.00
CAFCASS	£550.00
Corby CCG	£8,699.80
Nene CCG	£78,298.20
Further Education Colleges	£516.00
Horizons	£3,222.00
Northamptonshire County Council	£86,998.00
Northamptonshire Police	£42,532.60
Northamptonshire Probation Services	£1,289.00
Public Health (paid by NCC)	£32,824.20
Rainsbrook Secure Training Centre	£1,611.00
Schools Consultative Fourm (DSG)	£71,725.00
St Andrews Healthcare	£4,124.00
Corby Borough Council	£1,468.73
Daventry District Council	£1,622.45
East Northants Council	£1,896.57
Kettering Borough Council	£2,085.29
Northampton Borough Council	£4,886.20
South Northamptonshire Council	£1,832.14
Wellingborough Borough Council	£1,674.63
TOTAL	£349,144.81

Chapter 3 – Overview of Progress over 2015-16

Early Help and Prevention

In July 2015, a new Early Help Strategy was launched following widespread consultation. Between April 2015 and March 2016, 15 Phase 4 'Making Children Safer' events were held for practitioners working with children and families focussing on: best practice and changes to Early Help and the identification of children and young people vulnerable to, at risk of or subject to Child Sexual Exploitation (CSE), with 740 people attending these events. Feedback showed that participants felt these events increased their confidence in dealing with families' issues.

There has been a substantial increase in the number of Early Help Assessments initiated across the partnership with 3,459 completed during the year, against a target of 3000 and last year's figure of 2,747. Following the redesign of the Early Help Assessment which replaced the Common Assessment Framework (CAF), multi-agency Early Help Assessment training was provided and a series of Early Help Clinics and Marketplace events also took place.

The newly formed Early Help Support Service ensures easy access to advice, guidance and support for professionals working with children and families with early help needs, assisting with the identification of an appropriate lead professional when cases are stepped down and utilising the new 'Access to Support' process to ensure needs are matched to the most appropriate Tier 3 service.

The Northamptonshire Thresholds and Pathways document forms the basis for identification of needs, was updated in July 2015 following the launch of the Early Help Assessment, and is available via the NSCB website.

Early Help and Prevention teams have worked with 1,270 individuals providing early help interventions. The service supports families being stepped down from Social Care to Early Help as well as those with escalating needs at Level 3. An operating model based on the assessment tools from 'Strengthening Practice', Northamptonshire County Council's professional development programme for all those working directly with children and families, was also introduced. The operating model has significantly improved the quality of practice and the extent to which children are supported to achieve positive outcomes.

Supporting services contracts were re-commissioned in early 2016 with provision made for intensive family support; parenting support; domestic abuse support and interventions and support for young people which can be accessed through the Access to Support process for those families in need of additional help and where other early help interventions have not brought about the change needed.

Multi-Agency Safeguarding Hub (MASH)

The co-located MASH team consists of Children's Social Care, Police, Education and Health professionals and a number of virtual partners such as the Crime Reduction Initiative and Youth Offending Service. The MASH triages all incoming referrals to Children's Services and shares information to ensure children and families receive a responsive, proportionate service that enhances the safeguarding of children. The MASH partnership is currently in discussion with housing services in order to ensure their presence in the MASH.

The number of referrals for 2015-16 was 16,082, which is a reduction of 627 (3.75%) on the previous year.

A number of enhancements to the Early Help Offer have now taken place and in May 2015, an Early Help MASH team was created which included Early Help Coordinators and Social Workers. This has led to better working relationships and has bridged the gap in relation to referrals received that do not meet Tier 4. The Early Help MASH team contacts parents and professionals to offer advice to ensure that Early Help Assessments are initiated, and families are supported so that escalation to Tier 4 is prevented, where possible. This process has been successful with the team expanding from 6 to 10 members. Customer Advisors in the MASH continue to offer a professional advice line and take calls from professionals about how to undertake Early Help Assessments.

Chapter 3 – Overview of Progress over 2015-16

This table shows the number of Looked After Children, children subject to Child Protection procedures and Children in Need, per 10,000 children in the population.

Area (per 10k)	Mar-14	Mar-15	Mar-16	Stats Neighbour Comparison
Child Protection	50.2	64.2	62.6	41.3
Children in Need	278.5	313.4	332.3	317.8
Looked After Children	52.0	60.0	62.4	54.4

Northamptonshire had the 2nd highest number of referrals in 2014-15 out of 151 Local Authorities (behind Birmingham). Comparative figures for 2015-16 are not yet available.



Enquirer Agency	14-15	15-16
Anonymous	576	559
Domestic Abuse Protocol	16	6
Education – Other	421	412
Education – Schools	2760	3362
Family member	944	831
Fire and Rescue	8	3
Friend/neighbour	105	90
Health – A&E	746	561
Health – GP	345	286
Health – Health Visitor	235	201
Other Primary Health	1287	1291
Other Secondary Health	624	393
Health – School Nurse	21	19
Housing	201	263
LA – Other Local Authority	413	377
LA – Other NCC	1041	900
LA – Social Care	187	142
Other	1014	964
Police	4876	4556
Probation	347	349
Other Legal	309	247
Self referral	136	147
Third Party	97	123
Grand Total	16709	16082



Chapter 3 – Overview of Progress over 2015-16

Children’s Centres

Children’s Centre Services provide a range of services to families with young children (aged 0–4 years). The model for Children’s Centre Services is an important part of the Early Help approach, to ensure children in the county are effectively safeguarded and specifically that families with a child under 5 are provided with effective help and support to achieve good outcomes, whatever their circumstance or wherever they live. By the end of 2015–16, 59.8% of all children 0–4 years were registered with a Children’s Centre.

Changes to commissioned services in September 2014 were embedded in service delivery during 2015-16. Children’s Centre Services have two main components: Universal Access through Libraries; and Targeted Commissioned Children’s Centre Services.

Northamptonshire County Council’s Library Plus service provides the enhanced universal services as part of Children’s Centre Services for children under five and their families. Universal services are those that can be accessed by all families and do not require specialist expertise and include:

- Quick connection to a range of information and advice, resources and support to access further Children’s Centre Services
- Promotion of free early years entitlement for 2, 3 and 4 year olds
- Children’s Centre registration services
- Activities such as stories, song and rhyme times

- Recruiting and co-ordinating volunteers for Children’s Centre Services

Children’s Centre Services are delivered by external organisations and continue to support the delivery of some universal services to families (such as health services and Jobcentre Plus advice).

Their primary focus is to provide activities for families who need early help and targeted support. Contracts were awarded across Northamptonshire in September 2014, and are in place until March 2017, with scope for extension up to two further years, subject to performance.

Providers for each area are as follows:

- Daventry District – Action for Children
- East Northamptonshire District – Spurgeons
- Kettering Borough – Action for Children
- Northampton Central – Action for Children
- Northampton East – Action for Children
- Northampton North – Spurgeons
- Northampton West – Spurgeons
- South Northamptonshire – Action for Children
- Borough of Wellingborough – Action for Children

All activity provided by Children’s Centres is underpinned through an integrated pathway. The integrated offer to families includes Health services such as Health Visitors and Midwifery services, links to Early Years Provision and Jobcentre Plus. This approach is provided for all families where there is a child from pre-birth to five.

Chapter 3 – Overview of Progress over 2015-16

Work with Schools

Consistent engagement from schools in Northamptonshire is vital to ensure that the safeguarding of children in the county continues to improve and that opportunities are not missed. Significant work has been undertaken throughout 2015-16:

- All schools were invited to an anti-bullying event, funded by the NCC and NSCB, and organised by The Lowdown. The event was well supported with a number of schools signing up to a pledge to stamp out bullying. In November, The Lowdown also carried out a survey of young people aged 10 to 18 years and the findings have contributed to the development of a working tool for schools to use with victims of bullying.
- Schools have been engaged in events where the learning from Serious Case Reviews, other reviews and audits are discussed, giving an opportunity to strengthen safeguarding.
- In February, the NSCB attended a School Governors' event where they had the opportunity to engage with Governors around training, safeguarding arrangements and the role needed in ensuring safe practice in schools.
- An electronic Personal Education Plan (ePEP) for Looked After Children was launched in November 2015. The ePEP is able to accommodate young people in education, training, apprenticeships and employment. A bespoke planning section for those young people who are not positively engaged has also been developed.
- Throughout the year, schools continued to engage with the NSCB training offer, both face to face and online.
- An ongoing county-wide training initiative around Protective Behaviours was launched in September 2015. Protective Behaviours is an approach designed to enhance the resilience of children and young people, to enable them to recognise inappropriate approaches, to increase self-worth and self-esteem enabling children and young people to be better able to practice behaviours that protect them from bullying, abuse and exploitation.

There have been 12 Protective Behaviours/ Child Sexual Exploitation 2-day courses to date, with two representatives per school in attendance which enables feedback and training to be cascaded to colleagues.

By the end of March 2016, Year 1 of the programme included 85 Primary Schools, 30 Secondary Schools, 5 Special Schools and the Complementary Education Academy. Almost all of the Secondary Schools whose demographics has led Police to identify them as CSE problem area have attended this.

28 targeted Secondary Schools and Complimentary Education Centres received a performance of Chelsea's Choice, during an 18 day tour of the county. Schools were given advice around preparing pupils and staff for these performances, which included a question and answer session at the end of the performance. In addition, many Primary Schools (year 6) and Secondary Schools (Key Stage 3) have received material resources from Barnardo's (Real Love Rocks).



Chapter 3 – Overview of Progress over 2015-16

Designated Officers

The Designated Officer (referred to as the LADO in *Working Together 2015*) should be informed of all allegations against adults working with children and provide advice and guidance to ensure individual cases are resolved as quickly as possible. The purpose of this function is:

- To ensure the Designated Officer is notified promptly of an allegation
- To ensure the referral pathway process is consistent in the application of threshold
- To ensure the recordings of the allegation against adults are secure; and
- To ensure streamlined processes and prevent duplication and drift

The Designated Officer facilitates multi-agency meetings to gather information from all the agencies involved and works closely with employers, Children’s Social Care, Police and regulatory bodies such as the Health and Care Professions Council (HCPC) and Ofsted.

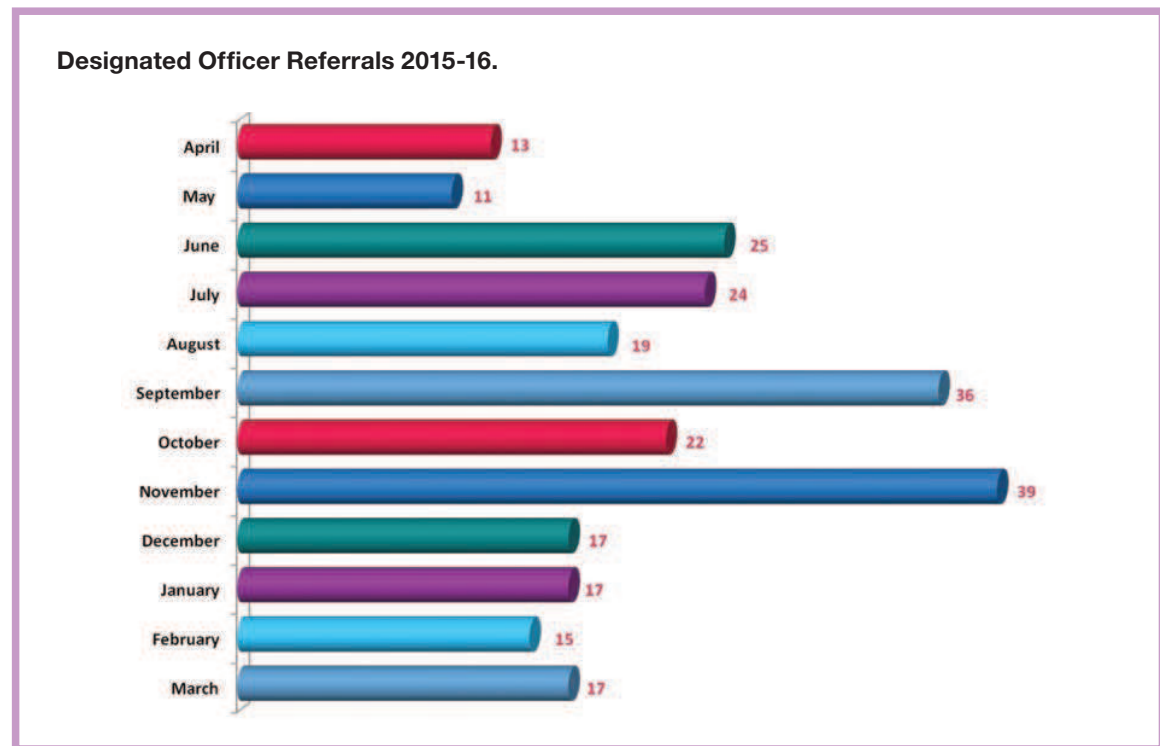
In Northamptonshire, there is a clear referral pathway for the management of allegations with all referrals going through to the Multi-Agency Safeguarding Hub (MASH) and with the implementation of case management systems, this has helped to improve the tracking of cases to completion.

There were 734 contacts received by the Designated Officers in 2015-16, which is an increase on 575 referrals received in 2014-15. This increase may be explained by the increased awareness raising of the Designated Officer’s role and improvements in the recording processes.

The table below indicates the breakdown of referrals to the Designated Officers.

The Designated Officers have delivered training and workshops to a number of organisations during 2015-16 and training continues to be an ongoing process and further awareness training sessions are planned for 2016-17.

A service user feedback form has been introduced and is accessible to professionals on the NSCB and NCC websites, which will provide important feedback to the Designated Officer service.

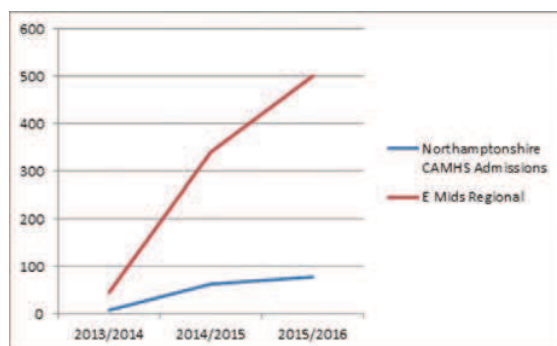


Chapter 3 – Overview of Progress over 2015-16

Young People who Self Harm

The number of children and young people admitted to hospitals in Northamptonshire continues to increase (figures are not yet available) and has led to the CCG creating a budget to focus on the redesign of the acute pathway in 2016-17. There are cases of younger children presenting during SATs and there has been some resilience work taking place across the partnership.

The Lowdown's 'Out There' programme is developing an anti-bullying toolkit and the 'Talk Out Loud' anti-stigma programme had 90% of schools participate in an Anti-Stigma day. The number of young people going into In Patient Provision has slowed compared to the East Midlands average, which is shown in the table below:



A survey of the use of the Self Harm Toolkit is currently being undertaken and there will be a wellbeing survey of children and young people taking place in 2016-17 to measure the impact the toolkit has had. It has already been accessed more than 40,000 times and other counties have asked for permission to use it in their areas. We will continue to ensure the tools are embedded across the workforce.

Domestic Abuse

Domestic abuse remained one of the NSCB's key priorities in 2015-16. In a bid to extend the range of support to children and families exposed to domestic abuse, Northamptonshire Police piloted a new project entitled 'Domestic Abuse Notification Scheme', whereby relevant schools or Health Visitors were made aware of Police callouts where domestic abuse was a factor. This enabled support to be offered to children within a 'safe' school environment.

The NSCB has been working with the Chief Housing Officers Group of the seven District and Borough Councils around the provision of crisis housing including short-term safe accommodation, and long-term move-on accommodation for victims, to enable families to leave refuge as quickly as possible.

The NSCB Business Manager is a member of the Domestic Abuse Strategy Implementation Group which is driving forward focused activities within the county.

Regular progress updates on domestic abuse are also made to the Improvement Board.

Licensing Applications

Since June 2015 the Safeguarding and Quality Assurance Service has acted as the statutory consultee for applications received under the Licensing Act 2003, for a range of licensable activities in the county. Applications relating to new and existing licences are checked to ensure there are no known issues under the "protection of children" licensing objective. During this period, copies of 89 applications have been received, with no objections raised.

Young People who Offend or are at Risk of Offending

The children and young people who are involved with Northamptonshire Youth Offending Service (YOS) usually have complex needs and require significant levels of support in the community and in custody. They often present high levels of vulnerability in addition to their risk of causing serious harm to others. During 2015-16, there were 251 Court Orders and formal Pre-Court interventions as compared to 296 in 2014-15, signifying a reduction in workload. This is largely due to the increased use of Out of Court outcomes and means that, proportionately, YOS is dealing with higher levels of risk and need.

Chapter 3 – Overview of Progress over 2015-16

At the end of 2015-16, 49% of the caseload open to YOS were also open to Children's Social Care. 29% of the total caseload were Looked After Children or had Leaving Care entitlements. Additionally, the YOS supervises Court Orders on behalf of other areas, and they are most often Looked After Children. This accounted for an additional 18 orders in 2015-16 and 26 in 2014-15.

Prevent

The NSCB's Prevent Strategy aims to raise awareness of reducing threats, risks and vulnerabilities posed by domestic extremists such as those from the far right and far left, including activities by extreme animal rights activists etc.

During 2015-16 the NSCB ran a series of thematic workshops looking at issues surrounding radicalisation and extremism, and also introduced an e-learning course entitled Pathways to Extremism which aims to develop an understanding of what extremism and radicalisation are and why it is important to discuss and address these. The training enables participants to:

- Know the main elements of the Prevent strand of the Government's CONTEST strategy
- Better understand what makes people vulnerable to radicalisation
- Know your responsibilities and recognise indicators that radicalisation might be taking place

NHS Nene and NHS Corby Clinical Commissioning Groups

A key function of NHS Nene and NHS Corby Clinical Commissioning Group's (CCGs) statutory responsibility is to deliver the safeguarding agenda by ensuring that the services it commissions have the systems, processes, policies and procedures necessary to effectively protect and safeguard children and young people. The CCGs have continued to work in partnership with all agencies across the health economy to achieve this and make sure that all health providers in Northamptonshire understand their role in the health and wellbeing of children and young people.

The CCGs provide strategic direction across the health economy and safeguarding clinical expertise through the Designated Professionals. The CCG has specific responsibilities for Looked After Children and supports the Child Death Overview process. Currently the effectiveness of the children and young people safeguarding system is assured and regulated in a number of ways by the CCGs. These include:

- NSCB Section 11 audit
- Safeguarding standards forming part of quality schedules within provider contracts
- Monitoring of safeguarding referrals and serious incidents requiring investigation
- Arranged or unannounced visits to wards/ departments within provider organisations

- Monthly Strategic Health Forum meetings with executive leads in attendance
- Attendance at provider safeguarding committees
- Annual report from providers
- Attendance at NSCB and the Corporate Parenting Board and their associated Sub Groups
- Supervision/peer supervision with Named Nurses in provider organisations
- Relevant policies and protocols underpinning practice

Areas of development for 2016-2017 include:

- Respond to the findings of the Ofsted inspection alongside multi-agency partners
- Continue to support the work of the Improvement Board/Transitional Board
- Section 11 audits to be undertaken with GP out of hours service and independent hospitals
- To review the general MASH arrangements across multi-agency partners
- Develop a robust CCG safeguarding team to ensure GP practices play a full role in safeguarding
- Strengthen awareness of domestic abuse across the health economy
- Develop and host the first Northamptonshire Safeguarding Week



Chapter 3 – Overview of Progress over 2015-16

Northamptonshire Police

Police Child Protection referrals have continued to increase, at least partly due to better awareness of safeguarding issues in all frontline Police staff and campaigns around CSE and Child Protection, which have also raised public awareness of how to identify and report safeguarding concerns. An HMIC data integrity inspection and robust force practices have improved the recorded levels of crime, giving a clearer picture of crime against young people in the county.

The RISE (Reducing Incidents of Sexual Exploitation) Unit received a significant increase in the number of referrals as a result of the ‘Say Something if You See Something’ campaign in 2015. A Protecting Vulnerable People proactive team has been recruited comprising a Detective Sergeant and six Constables. Daily meetings give the RISE team an opportunity to review all new referrals for both CSE and missing children, allowing those children at greatest risk to be prioritised. The proactive team also operates under the authority of the Police CSE and Missing Forum, conducting proactive disruption and intelligence gathering with a focus on CSE.

The 976 reports of missing children over the twelve month period come from 464 individual young people and 79 of these are classified as frequently missing. Robust reporting processes have been implemented and work to develop closer relationships with frequently missing young people, addressing the root cause for their behaviour, is a priority for 2016-17.

On a positive note, violent crime against young people decreased by over 50% in the past twelve months. Custody detentions for children remain much lower than a year ago, with arrests for young people also showing a declining trend.

Chapter 4 – Progress Reports from Sub Groups

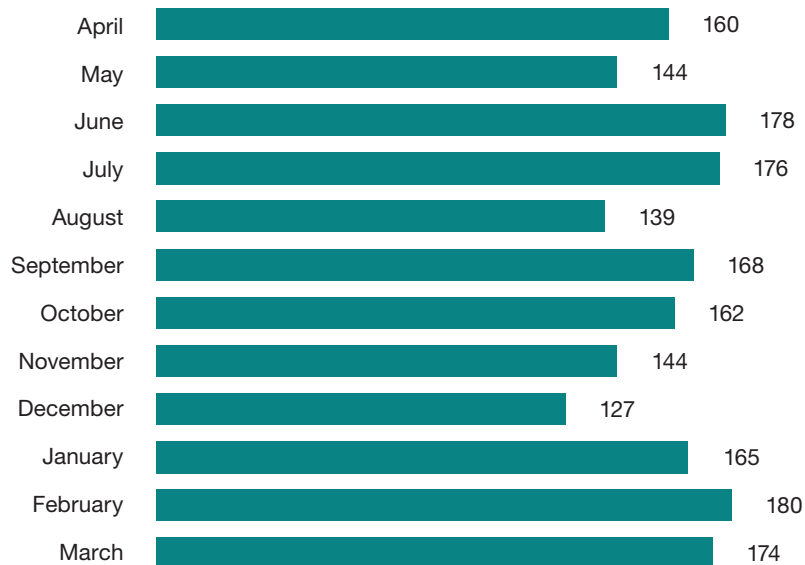
Child Sexual Exploitation (CSE) & Missing

Child Sexual Exploitation and Missing Children is a Sub Group of the NSCB. The aim of the group is:

- To raise awareness
- To identify areas of concern within the county;
- To develop an effective response to tackle perpetrators of CSE
- To ensure that there is support for victims of CSE and their families

The Sub Group regularly reviews a variety of data, including a monthly report from RISE (Reducing Incidents of Sexual Exploitation). RISE is Northamptonshire's dedicated multi-agency team for tackling CSE and comprises staff from Police, Safeguarding and Children's Services, CAN (3rd sector drug, alcohol and homeless service), and Health. The monthly report encompasses a range of statistical data, together with narrative on investigations of note, key disruption activities across the county and other outputs such as the delivery of training.

Total number of missing and absent incidents reported 2015-16



Evidence of Impact

- The 'Tackling CSE Toolkit' provides advice for all professionals on their responsibilities in relation to identifying CSE and what action should be taken when identified. The Toolkit and presentations from the Northants Tackling CSE Conference held on 22nd May 2015 can be viewed on the website: www.northamptonshirescb.org.uk
- A high profile publicity campaign with the tagline 'Say Something If You See Something' to highlight the signs of CSE, and encourage reporting was completed
- A multi-agency CSE and Missing performance data scorecard has been developed and is reviewed regularly by the group
- Protective Behaviours and CSE training programmes for schools have been developed and delivered to a number of schools in the county throughout the year

Priorities for the coming year

The Sub Group's Action Plan will be refreshed and monitored in line with recommendations to come from the recent Ofsted Review and Business Plan.

The Sub Group will focus on ensuring that partners are delivering or commissioning innovative services and responses to children and young people at risk of or who are being sexually exploited.

Chapter 4 – Progress Reports from Sub Groups

Communications

Following the re-branding last year, 2015–16 represents the first full year that the new website and communications strategy has been in place. The Sub Group continue to meet on a bi-monthly basis with continued focus on the media management of Serious Case Reviews and to drive the development of Twitter and input into the website.

Media campaigns include a Safe Sleeping Campaign in January 2016, which attracted local media interest as well as interest from a number of other Local Safeguarding Children Boards and the Phase 2 campaign on Child Sexual Exploitation which was launched in November 2015.

In addition to the work of the Sub Group, the NSCB produced bi-monthly e-newsletters and targeted e-bulletins, including specific bulletins on Serious Case Reviews, training and updates to the Procedures Manual.

Evidence of Impact

The NSCB now has over 500 followers on Twitter. During 2015–16, the website recorded 35,048 users, with 205,818 page views. The NSCB website can be found at www.northamptonshirescb.org.uk

User feedback about the website and newsletter

'The website is lovely, very pleasing on the eye.'

'Much more accessible. Easier to get around, and looks more appealing.'

'I like the newsletter very much. It's easy reading, very comprehensive and lots of helpful links which makes it easier to keep up to date with developments locally.'

'Really positive – succinct and to the point.'

Priorities for the coming year

The Sub Group's Action Plan, in line with the NSCB Business Plan priorities, will be monitored and reviewed at each Sub Group meeting.

Detailed evaluation will take place to ensure the website, newsletter and twitter profile have a positive impact on practitioners to affect positive influence on practice.



Chapter 4 – Progress Reports from Sub Groups

Female Genital Mutilation (FGM)

The Female Genital Mutilation (FGM) Sub Group was established in August 2015 following discussion about need from the Child Sexual Exploitation (CSE) Sub Group and the Executive Support Group (ESG). The group has the following aims:

- Delivery of an effective Communications Strategy to improve awareness of FGM
- Delivery of a detailed data profile for FGM in Northamptonshire
- Ensuring the availability of FGM training to all key roles across the partnership

Evidence of Impact

- A Community Group was established in October 2015 to ensure that the work to tackle FGM is community led. Members include representation from the Somali, Kenyan and Zimbabwean communities, Councillors, Northamptonshire Rights and Equalities Council, the Black and Minority Ethnic Sub Regional Partnership, Creating Equalz, Northamptonshire Flower, and also Refuge providers and Community Police. A key achievement has been the establishment of two male community members on the group one of which has received training to deliver the anti-FGM message to men. The tagline for this is 'This is a family issue not just a women's issue'.

- Joint meetings between the Sub Group and the Community Group occur quarterly, giving an opportunity for members of the Community Group to speak directly with professionals about their experience of services
- Clear referral pathways have been established and a flow chart jointly devised with Social Care, Police and Early Help to provide professionals with clear direction on roles and responsibilities from initial reporting to intervention
- Analysis has started to identify the number of women in the county that have had FGM and to identify those most at risk
- Key areas of risk have been established to enable a targeted approach to our work with schools
- In line with mandatory reporting, guidance and information was promoted through the NSCB newsletter and website

Priorities for the coming year

The Sub Group's Action Plan will be refreshed and monitored in line with recommendations to come from the recent Ofsted Review and Business Plan.

Ensure a comprehensive communications campaign is in place that links in with opportunities to work locally to complement national campaigns.

An FGM Local Profile to be developed to inform services across Northamptonshire.

Complete the mapping of existing support services in the county to strengthen support available across pathways and the Criminal Justice System.

Chapter 4 – Progress Reports from Sub Groups

Learning & Development

The NSCB training offer is based on a detailed training needs analysis carried out by Barnardo's and reported in June 2015. Leading providers, Barnardo's and Virtual College are commissioned to deliver a range of learning opportunities face to face or via e-learning.

Face to Face Training

81 face to face training courses were delivered, providing 1,829 learning & development opportunities; this is an increase of 16% (1,101) from 2014-15. A number of other learning opportunities were also made available and provided an additional 1,706 training sessions for practitioners.

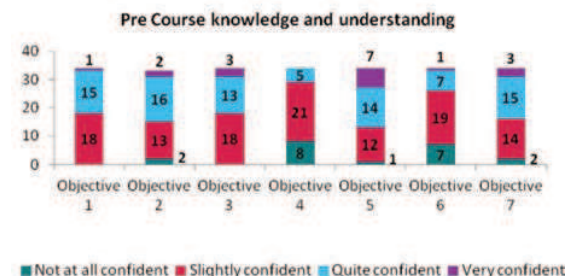
Impact of Training Events

Independent impact evaluations have been undertaken on the CSE Conference, Thresholds and Pathways Training and Working Together Course were undertaken. The analysis details how practitioners have implemented learning and how they continue to share knowledge with their colleagues.

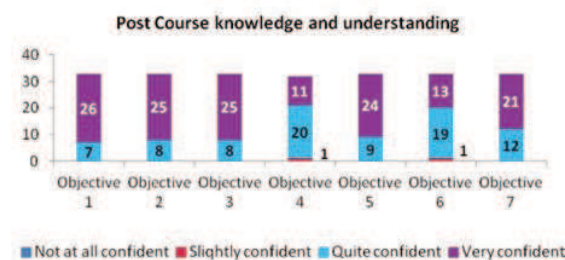
'I have made sure that my friends and colleagues are aware of CSE, the vulnerabilities associated with it and how many young people are affected by it. I have also explained what the signs may be and where to find the toolkit.' – CSE Conference

'Now I fully understand what warrants a referral I will have more confidence knowing which route to take depending on individual circumstances.' – Thresholds & Pathways / Early Assessments

'I work in custody and we are rolling out the assessment in our workplace to assess young people's risk of CSE and using this to inform our practice and liaising with external agencies regarding risk and vulnerability.' – CSE Conference



The graph below evidences that the training had a positive impact on the delegates that attended the CSE full day course.



E-Learning

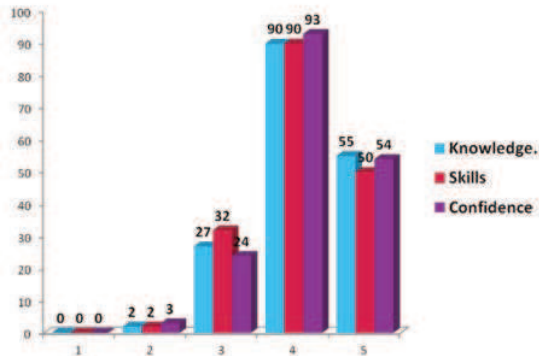
3,201 people completed an e-learning course, which is a considerable increase on the 1,537 completing in 2014-15. The most popular courses accessed were Awareness of Child Abuse and Neglect which were completed by 1,513 professionals. 622 courses were accessed by schools' staff, 317 by the voluntary sector, 310 by Public Health and Wellbeing, 294 by foster carers/residential homes and 224 by Northamptonshire County Council, Learning Skills and Education.

Impact of E-Learning Courses

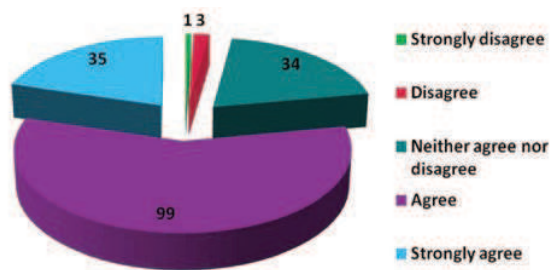
The graphs in this section show the impact the e-learning courses have on learners and the improvements they have made on practice. The results help to evidence that the £2.92 cost per course completed during 2015-16 offers value for money in raising awareness of safeguarding.

Chapter 4 – Progress Reports from Sub Groups

Having put your learning into practice, please reassess your...



Participation in this e-learning course has supported me to make measurable improvements to my work practice



'Development of the new safeguarding training for staff and updates to our policies including taxi policy and training for taxi drivers and organisations.' (District & Borough Council) – *Safeguarding Children from Abuse by Sexual Exploitation*

'I have added the Prevent Duty document to our Safeguarding Policy and asked all staff to read it and sign a record once this is done.' (NCC – Learning, Skills and Education) – *Understanding Pathways to Extremism and the Prevent Programme*

'Since doing this course, we have displayed more information to our learners regarding FGM. We have also updated our paperwork to include FGM awareness for our staff.' (Further Education) – *Female Genital Mutilation: Recognising and Preventing FGM*

Priorities for the coming year

The Sub Group's Action Plan, in line with the NSCB Business Plan priorities, will be monitored and reviewed at each Sub Group meeting.

Continue to evaluate the impact of all of courses and understand the positive effect on frontline practitioners in keeping children and young people safe.

Ensure where evidence of attendance at NSCB training events is low that agencies are training their staff appropriately.

Chapter 4 – Progress Reports from Sub Groups

Policy & Procedures

The Policy and Procedures Sub Group works to ensure the partnership reviews and implements policies and procedures, responds to changes in statutory guidance and enables the partnership organisations to have effective processes and procedures in place.

During the year the Sub Group revised and developed a number of policies and procedures to ensure compliance with a variety of revised legislation and statutory guidance, whilst ensuring the procedures are updated as a result of recommendations from any Serious Case Review or audit activity undertaken by the NSCB. This has included the creation of the Concealed Pregnancies Practice Guidance as a direct result of the Child R and Family R Serious Case Review, which also resulted in the review of the Neglect Procedure undertaken under the Sub Group's remit.

The NSCB Procedures Manual currently contains 85 chapters. The table below details the number of revisions and reviews that took place during 2015–16 as well as the number of new policies and procedures added to the Procedures Manual following an identified need:

Number of policies, procedures or tools contained in the manual	85
Number of policies, procedures or tools reviewed during 2015-16	85
Number of reviews resulting in an update	43
Number of reviews with no update required	34
Number of new policies, procedures or tools added to the manual in 2015-16	5

Evidence of Impact

The focus of the Sub Group during 2015-16 has been on ensuring practitioners are making use of NSCB policies, procedures and toolkits when working with children, young people and their families. This has been done through a variety of means including analysing website hits on the Procedures Manual. During 2014-15, 17,581 sessions (defined as the period the user has been actively engaged with the manual) were recorded. During 2015-16 this increased by 27% to 22,399 sessions.

The group also conducted a very small scale survey on the manual of those respondents who had accessed the manual and 100% stated they found its contents helpful. These respondents also said the policy had an impact on their day to day practice.

The Policies & Procedures Sub Group links with the Learning & Development Sub Group to ensure appropriate training is made available, where necessary.

Priorities for the coming year

The Sub Group's Action Plan, in line with the NSCB Business Plan priorities, will be monitored and reviewed at each Sub Group meeting.

To move to the new Tri-x template manual offering better functionality of the manual and the ability to include more local information.

A clear plan for communicating changes in policies and procedures will be delivered against using the new NSCB website, monthly newsletters and regular e-bulletins.

Practitioners are aware that the NSCB website and Procedures Manual are a 'one stop shop' for all policies, procedures and practice guidance.

To use Google Analytics provided by the Procedures Manual and website to analyse practitioners' use of the Procedures Manual on a quarterly basis.

To carry out spot checks of practitioner awareness of 10 chapters contained in the Procedures Manual.

To carry out an annual survey on the impact of the Procedures Manual.

Chapter 4 – Progress Reports from Sub Groups

Quality Assurance (QA)

The Quality Assurance (QA) Sub Group is responsible for meeting the statutory function in monitoring and evaluating the effectiveness of single-agency and multi-agency safeguarding processes by:

- Developing a framework which evidences the impact of the business plan and NSCB priorities
- Assessing the effectiveness of the help being provided to children and families including Early Help
- Ensuring audit findings are shared with NSCB Sub Groups
- Overseeing and ensuring there are effective quality assurance processes in place across NSCB partners
- Developing, maintaining and tracking the NSCB performance framework
- Identifying issues that compromise the ability of agencies to provide services that keep children safe, challenging where appropriate and ensuring that the NSCB is fully appraised of any issues raised
- Ensuring service users and partners are involved in giving their views on the quality of service they receive

Evidence of Impact

- Section 11 audit for Early Years settings was completed by 961 providers and the responses analysed. There is ongoing activity with Northamptonshire County Council's Early Years Team to undertake further evaluation and monitoring
- Four Multi-Agency Case Audits (MACA) were undertaken, including: bruising in non-mobile babies, neglect, self harm and children with a disability. QA member agencies shared learning from the MACAs and developed actions to embed into practice. Learning summaries were also shared across the partnership and made available on the NSCB website
- All agencies provided regular performance data which is scrutinised by QA members. Based on the learning and recommendations from Serious Case Reviews and other reports, amendments and additional indicators have been proposed for inclusion in 2016-17 scorecards
- Quarterly Designated Officer reports were discussed and changes made to provide improved information for NSCB partners e.g. identification of schools/NHS providers to track referral activity
- A number of single agency case audits and individual agency reports were presented, giving members an opportunity to learn and scrutinise practice in other areas and share information

Priorities for the coming year

The Sub Group's Action Plan, in line with the NSCB Business Plan priorities, will be monitored and reviewed at each Sub Group meeting.

The structures and evaluations of Section 11 and Section 175 audits will be reviewed and updated.

The implementation of MACA audits and format of the learning summaries will be revised to further ensure the embedding of learning and sharing of good practice.

Chapter 4 – Progress Reports from Sub Groups

Young People's NSCB

A key priority for the NSCB during 2015–16 was to engage with children and young people via the Young People's NSCB, to enable support to the Board in determining safeguarding priorities, shape the provision of services and tell us how we are doing.

In May 2015, the Board actively engaged with a group of young people to discuss the key priorities identified by the Board and what young people's opinions of these subjects were and how they could be safeguarded more effectively. These key issues were:

- Radicalisation
- Domestic Abuse
- Child Sexual Exploitation
- Female Genital Mutilation
- Neglect

The discussion resulted in the group of young people issuing the Board 5 challenges via video at its Annual Conference that the Board has worked on. The Board will respond to the young people at its conference in 2016.

Young People's 5 Challenges to the NSCB

1. *CSE: 'How will you educate us in what CSE is and prove people will act quickly if we report it?'*
2. *Radicalisation: 'How will you prove that radicalisation is an issue in Northamptonshire?'*
3. *FGM: 'How can we understand why different cultures do it?'*
4. *Domestic Abuse: 'How will you encourage us to speak out about domestic abuse?'*
5. *Neglect: 'How will you help us understand what neglect is and how can we speak to people who have experienced neglect?'*

To facilitate this the NSCB has attended a number of youth groups including Shooting Stars and Children in Care Forum and has engaged with the Early Help Partnership's Shadow Board on a regular basis to gather their views, opinions and concerns about safeguarding issues.

During 2015-16 it became clear to the Board, that the same young people were engaging with a number of different youth voice structures within the county and we needed to widen representation. With this in mind, the Board has reviewed the way in which it engages with young people in the county and concluded that delivery of specific targeted sessions within schools would enable Project Officers to raise awareness and obtain the opinions of a wider cohort of children and young people.

Priorities for the coming year

Consultation with both existing and new School Councils with an aim to engage with a cohort of young people from schools to strengthen the Young People's LSCB, with broader membership. Similar approaches are planned with a series of targeted events and consultations with Further Education Colleges, Primary Schools and other youth groups.



Chapter 4 – Progress Reports from Sub Groups

Your Safety

Since the start of 2016 the group reports to both the Corporate Parenting Board and the NSCB, and is attended by partners including the Police, NCC Commissioning and the Youth Offending Service. Other colleagues have also attended in relation to specific issues, such as the Prevent strategy. Abigail Marsden (Strategic Manager for Corporate Parenting, NCC) is now Chair.

Key data and trends are monitored at each meeting, such as the proportion of children subject to the various legal orders, and the number of Looked After Children or care leavers on the Youth Offending Service caseload – the following table highlights key data reviewed by the Sub Group on a monthly basis. Note: this activity commenced in March 2016, but April and May 2016-17 figures have been included to give context for the ongoing analysis.

The group has focussed on a number of thematic issues affecting Looked After Children and care leavers, including placement suitability, sexually harmful behaviours and online safety. For each area, services have been challenged and policy and procedure updated where required; a specific e-safety policy for Looked After Children is being developed for example.

Looked After Child (LAC) breakdown by legal status	March	April		May	
Section 20 placement	349	336	-13	314	-22
Full care order	348	360	12	363	3
In LAA on remand or committed for trial or on COSR	3	3	0	3	0
Interim care order	182	198	16	215	17
Placement order granted	92	88	-4	83	-5
Police protection	1	0	-1	1	1
TOTAL LAC	975	985	10	979	-6
Breakdown by selected criteria					
No. accessing tier 3 treatment for substance misuse	16	16	0	16	0
No. in secure accommodation	2	1	-1	2	1
Children in B and B accommodation	0	0	0	0	0
LAC placed with parents	22	27	5	29	2
Out of county placements	243	248	5	249	1
No. of care leavers	418	427	9	421	-6
No. of UASC	131	136	5	134	-2
Care leavers/LAC who are parents				150	
LAC open to Youth Offending Services	46	51	5	46	-5

Chapter 4 – Progress Reports from Sub Groups

RISE (Reducing Incidents of Sexual Exploitation) is sharing its reports with the group on a quarterly basis, with sections dedicated to Looked After Children and the need for a specific strategy has been agreed. NCC and health services are collaborating in order to establish pathways for children exhibiting sexually harmful behaviour; this appears to have been an area that has not been understood well enough by practitioners.

A task and finish group has been set up to promote the safety of Looked After Children within the Criminal Justice System; this is timely in light of a new national report about this issue: In Care, Out of Trouble. Designated Officers are also providing quarterly reports to the group regarding allegations made against adults who work with our young people.

Significant challenge is being put to the service in regards to the overuse of Section 20 placements by the Local Authority, and conversions to Special Guardianship Orders have taken place in a number of cases. Placements with parents are also being monitored through quarterly reports, and sufficiency is also an acute issue being examined closely.

Your Safety is committed to ensuring the voice of young people is central to all areas of work. The Young Northants website, as a source of information for young people on how to stay safe and share any concerns is being promoted across the partnership. Viewpoint remains a useful tool for Looked After Children to provide views for their statutory reviews, but the group has agreed that the system cannot be regarded as representative of the Looked After population as a whole.

Evidence of Impact

- A substantial challenge was levelled to Northampton County Council in respect of the safeguarding measures in place for commissioned foster placements, and the outcome of this was satisfactory
- Voice of the Child – after agreement was reached that it would not be suitable for a young person to attend the meetings, the Chair is instead attending meetings of the Children in Care Forum
- After a review of NCC's practices in ensuring the online safety of Looked After Children, a policy in this area is being developed
- A task and finish group has been set up to promote the safety of Looked After Children within the Criminal Justice System

Priorities for the coming year

To design processes that enable better tracking of Looked After Children on their journey through care and promote permanency at an earlier stage.

Continuing to monitor thematic areas of concern, and providing challenge to services where required.

A policy specifically geared to the online safety of Looked After Children is to be agreed.

Pathways/policies will be established in relation to Looked After Children exhibiting sexually harmful behaviour.

After the recent Ofsted inspection, the new Improvement Plan will inform the future priorities of the Sub Group.

Chapter 5 – What Happens When a Child Dies or is Seriously Harmed in Northamptonshire?

Child Death Reviews

The Child Death Review Sub Group (also known as Child Death Overview Panel) is a Sub Group of the NSCB. It undertakes a systematic review of all child deaths to help understand why children die. By focusing on the unexpected deaths in children, it makes recommendations for any interventions it considers appropriate to help improve child safety and welfare to prevent future deaths. When a child dies unexpectedly a process is set in motion within 3 working days, to review the circumstances of the child's death, and includes support in place for the family, which allows time to collate relevant information for the Early Professionals Meeting.

All child deaths expected and unexpected are reviewed and in Northamptonshire, the majority of child deaths are reviewed within six months.

During 2015-16, number of notifications received:

Total number of notifications received	53
Total number of deaths considered unexpected	17

Reviewing unexpected deaths within Northamptonshire, various modifiable factors have been identified that could help prevent child deaths in the future and learning has been disseminated across the relevant agencies.

Evidence of Impact

- Due to an increase in the number of unexpected child deaths associated with co-sleeping, a local Safe Sleep Campaign was launched in January 2016 to promote the safest place for a baby to sleep and raise awareness of the known risk factors, particularly around co-sleeping
- We proactively reviewed the Child Death Review and Response arrangements which resulted in partners' addressing their processes to ensure best practice
- When a child died at school, a piece of work was undertaken to establish the location of medical support in the county and challenge schools to ensure their pupil data is kept up to date
- A bulletin has been disseminated across all GP practices giving details and symptoms of rare conditions identified as causes of death within the county to raise awareness

Priorities for the coming year

The Sub Group's performance will continue to be monitored and reviewed on a six monthly basis.

The Sub Group's Action Plan will be refreshed and monitored in line with recommendations from the recent Ofsted Review and Business Plan.

Serious Case Reviews

A serious case is one where;

- abuse or neglect of a child is known or suspected; and
- either – (i) the child has died; or
(ii) the child has been seriously harmed and there is cause for concern as to the way in which the authority, their Board partners or other relevant persons have worked together to safeguard the child

Local Safeguarding Children Boards must always undertake a review of these cases. These reviews are called Serious Case Reviews (SCRs). The purpose of a Serious Case Review is to establish

Chapter 5 – What Happens When a Child Dies or is Seriously Harmed in Northamptonshire?

whether there are lessons to be learnt from the case about the way in which local professionals and organisations work together to safeguard and promote the welfare of children. The NSCB has also been committed to undertaking smaller scale multi-agency case reviews for instances where the case does not meet the criteria for a Serious Case Review but it is considered that there are lessons for multi-agency working to be learnt.

During 2015-16, 10 cases were brought to the attention of the NSCB Serious Case Review Sub Group.

No further action required	1 case – single agency audits requested through Child Death Review Sub Group
Single Agency Review	4 cases
Requiring further investigation	1 case
Case Mapping Exercise	2 cases
Multi-agency Review	2 cases

Recommendations:

In addition, a Thematic Audit of twenty six cases was undertaken regarding young children who had received non-accidental injuries.

During the year, one Serious Case Review was published (Child R and Family R) and a further three Serious Case Reviews are awaiting completion of criminal trials before publication.

Significant focus has been put on ensuring learning from reviews is disseminated across the partnership. Each review undertaken has a 6 step briefing identifying the findings and learning. This is distributed to all agencies for team discussion and follow-up and is available on the NSCB website.

Evidence of Impact

- An SCR identifying intermittent yet persistent neglect has been very influential in the Primary School robustly reviewing their safeguarding and child protection arrangements to ensure children are appropriately safeguarded
- An SCR identified the need for Concealed Pregnancy guidance, which was made available on the NSCB website in July 2015. The guidance was promoted and is used by professionals in both acute trusts
- An SCR supported the further development of the NSCB Dog Assessment Tool with additional guidance for professionals. This has produced an increase in the number of referrals to the MASH and encouraged professionals to ‘think family’ and consider wider potential safeguarding risks

Priorities for the coming year

The Sub Group’s performance will continue to be monitored and reviewed on a six monthly basis.

The Sub Group’s Action Plan will be refreshed and monitored in line with recommendations from the recent Ofsted Inspection and Business Plan.

Increased focus on the dissemination of learning from reviews and the monitoring of impact.

Trial the Welsh methodology when undertaking SCRs.

Chapter 6 – Challenges Ahead and Future Priorities

National Drivers

- Ensure there are effective arrangements for delivering and monitoring services to monitor the impact of adult mental health issues on children
- Ensure NSCB is visible and influential through effective engagement with other agencies, partnerships, practitioners, voluntary and community sector, children, young people and their families and the wider community
- Ensure Northamptonshire Safeguarding Children Board is an effective LSCB which meets its statutory responsibilities and promotes a culture of challenge, accountability and shared learning



Annual Safeguarding Children Conference – July 2016

The Annual Safeguarding Conference is scheduled for Thursday 7th July 2016 at The Saints in Northampton. We have increased the number of places available for professionals this year due to demand.

Following on from the Annual Conference in 2015, we listened to the feedback from professionals and concentrated efforts on creating a Neglect Toolkit that is being launched in May 2016. We developed the Female Genital Mutilation Sub Group with input from community groups. We also delivered a second media campaign on the subject of Child Sexual Exploitation in January 2016.

Chair's Challenge Log

The document is an important register of key issues raised by the Chair and the responses from relevant partners. The Chair's Challenge Log is updated regularly and available upon request.

NSCB Business Plan 2015–17

The NSCB Business Plan 2015-17 was reviewed in November 2015, taking into account priorities from:

- National drivers
- Annual Safeguarding Children Conference; and
- Improvement Board priorities

Key Priority Areas for 2016-17

Board

- Continue to strengthen partnerships
- Strengthen the quality assurance function to include evaluation and monitoring of progress of Section 11 and Section 175 audit activities
- Maintain a Quality Assurance Framework and using this to drive improvements
- Implement robust analysis on agency performance and lessons learned from audit activity
- Deliver against the Learning and Improvement Framework
- Using outcomes from Serious Case Reviews to drive learning and development across the partnership; and
- Engage with children and young people to shape the provision of services

Chapter 6 – Challenges Ahead and Future Priorities

Board and Partnership

- The full and committed engagement with the Board across all Sub Groups from partners, with the right people around the table, to take actions and deliver the change needed
- Partners to appropriately engage with Early Help Services, to ensure the right children are provided with the right support at the right time
- The use of intelligence and detailed assessments to drive improved outcomes for vulnerable children, with a specific focus on the Corporate Parenting Board, Health and Wellbeing Board and the overall commissioning of services
- Reviewing the impact and efficacy of safeguarding services across the partnership, ensuring that the voices of children are central to service improvements and delivery
- Continue to raise the profile of the Board to ensure that all key stakeholders are able to engage with the Board and are informed of its work
- Implement recommendations from the NSCB Ofsted review

Themes

- Engage with children and young people so that their views on safeguarding are understood and prioritised
- Understand the current service developments to support families affected by domestic abuse
- Understand neglect in Northamptonshire and how all partners identify and support children and families at the earliest opportunity
- Deliver a comprehensive Action Plan to safeguard children and young people at risk
- Review the preventative work, support and access to help and services to children and young people at risk of or affected by female genital mutilation
- Ensure partners continue to deliver innovate services and responses to children and young people at risk or who are being sexually exploited
- Develop a plan to ensure the threat of radicalisation and violent extremism is effectively embedded in safeguarding practice and that professionals across the children's workforce are engaged and signposted
- Develop a clear understanding of the difficulties posed to families and 16-17 year olds young people facing homelessness



Chapter 7 – What Next for Child Protection in Northamptonshire?

Key Messages to:

Local Politicians

- To continue to support the work of the Improvement Board and the Children's Services Improvement Programme, in order to raise the standard from inadequate to good; and
- When you scrutinise any plans for Northamptonshire, keep the protection of children at the front of your mind. Ask questions about how any plans will affect children and young people

Clinical Commissioning Groups (CCG)

- CCGs in the Health Service have a key role in scrutinising the governance and planning across a range of organisations; and
- You are required to discharge your safeguarding duties effectively and ensure that services are commissioned for the most vulnerable children

The Police and Crime Commissioner

- Ensure that the voices of all child victims are taken notice of within the Criminal Justice System, particularly in relation to listening to evidence where children disclose abuse; and
- Monitor what Police and Probation staff do to share information regarding high risk MAPPAs and MARAC cases and the risks that some adults present to children

Chief Executives and Directors

- Ensure your workforce is able to contribute to the provision of NSCB safeguarding training and to attend training courses and learning events
- Your agency's contribution to the work of NSCB must be categorised as of the highest priority. Every agency must ensure that it takes into account the priorities within the NSCB Business Plan and the agency's own contribution to the shared delivery of the NSCB's work. This includes meeting the duties of Section 11 of the Children Act 2004 and ensuring that agencies are able to contribute to the NSCB's work programme with appropriate resources and personnel; and
- The NSCB needs to understand the impact of any organisational restructures on your capacity to safeguard children and young people in Northamptonshire

Head Teachers and Governors of Schools

- Ensure that schools are compliant with 'Keeping Children Safe in Education' (DfE, 2016) which outlines the processes which all schools, in the maintained, nonmaintained or independent sector, must follow to safeguard their pupils

Messages for the Children's Workforce

- Ensure you are booked onto, and attend, all safeguarding courses and learning events required for your role

- Be familiar with, and use when necessary, Threshold and Pathway procedures to ensure an appropriate response to safeguarding children and young people; and
- Use your representative on the NSCB to make sure the voices of children and young people and front line practitioners are heard

The Community

- You are in the best place to look out for children and young people and to raise the alarm if something is going wrong for them; and
- We all share responsibility for protecting children. If you are worried about a child, call Northamptonshire's Children's Services on 0300 126 1000

Local Media

- Communicating the message that safeguarding is everyone's responsibility is crucial to the NSCB and you are ideally positioned to help do this; and
- The work of NSCB will be of great interest to your readers and listeners

Children and Young People

- Children and young people are at the heart of the Child Protection system. Your voices are the most important of all. The NSCB plans to develop better ways of hearing children and young people's voices

Board Membership List

As at 31st March 2016, membership of the NSCB Board was as follows:

Mark Ainge

Head of Community Services,
Northamptonshire Fire and Rescue

Akeem Ali

Director of Public Health & Wellbeing,
Northamptonshire County Council

Suzanne Binley

Business Manager, Northamptonshire
Safeguarding Children Board

Ann Bodsworth

Voluntary Sector Representative, Chief
Executive, Northampton Women's Aid

Peter Boylan

Director of Nursing & Quality, Nene and
Corby Clinical Commissioning Groups

Cindy Brewster

Deputy Director & Head of
Resettlement, Rainsbrook Secure
Training Centre

Paula Bright

Senior Executive, Horizons

John Campbell

Chief Executive, Borough Council of
Wellingborough

Cathy Chaplin

Lay Member

Dr Jamie Clarke

Headteacher, Sponne School

Laura Clarke

Headteacher, Rowan Gate School

Manjit Darby

Director of Nursing, NHS England

Louise De Groot

Local Quality Manager, East Midlands
Ambulance Service

Martin Fahy

Deputy Director of Nursing and Quality,
NHS England

Carolyn Fox

Director of Nursing Midwifery and
Patient Services

Cllr Matt Golby

Cabinet Member for Learning Skills and
Education, Northamptonshire County
Council

Leanne Hackshall

Director of Nursing and Quality,
Kettering General Hospital

Jen Helm

Head of Children's Safeguarding,
Northamptonshire Police

Mike Hodgson

Youth Offending Service Manager

Alex Hopkins

Director of Children, Families &
Education, Northamptonshire County
Council

Tracy Keats

Assistant Director of Safeguarding,
Nene and Corby Clinical
Commissioning Groups

Palvinder Kudhail

Assistant Director, Safeguarding and
Children's Services, Northamptonshire
County Council

Carolyn Kus

Director of Adult Social Care Services,
Northamptonshire County Council

Ben Leach

Head of Safeguarding and Dementia,
Northampton General Hospital

Jonathan Lewis

Assistant Director Learning Skills and
Education, Northamptonshire County
Council

Steve Lingley

Head of Crime and Safeguarding,
Northamptonshire Police

Simon Lloyd

Deputy Director of Nursing & Safety,
St Andrew's Healthcare

Keith Makin

Independent Chair, Northamptonshire
Safeguarding Children Board

Rachel Mackenzie

Senior Probation Officer, National
Probation Service

Sharon Muldoon

Assistant Director, Quality &
Performance, Northamptonshire
County Council

Julie Shepherd

Director of Nursing, AHP's & Quality,
Northamptonshire Healthcare NHS
Foundation Trust

Cllr Heather Smith

Deputy Leader and Cabinet
Member for Children's Services,
Northamptonshire County Council

Judith Staff

Lay Member

Helen Statham

Volunteer Representative, Healthwatch
Northamptonshire

Janice Straker

Service Manager, CAF/CASS

Rachel Swann

Assistant Chief Constable,
Northamptonshire Police

Sharon Toyer

Deputy Director Operations –
Children and Ambulatory Services,
Northamptonshire Healthcare NHS
Foundation Trust

Northamptonshire Safeguarding Children Board Annual Report 2015-16



www.northamptonshirescb.org.uk



Follow us on Twitter: @NorthantsSCB

